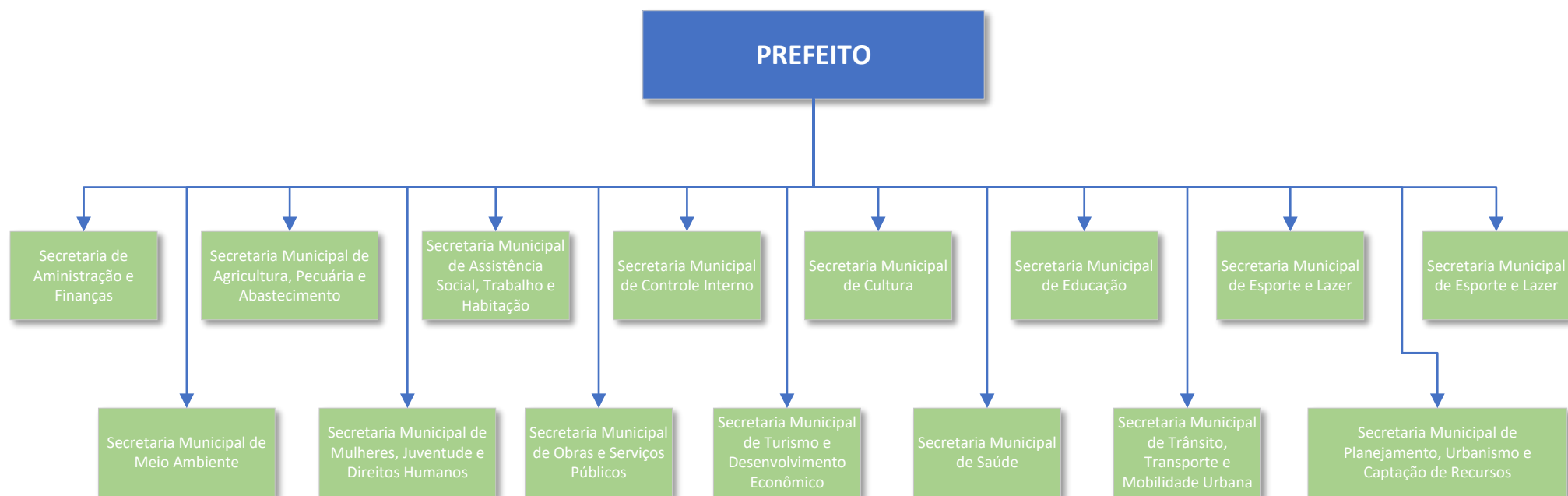


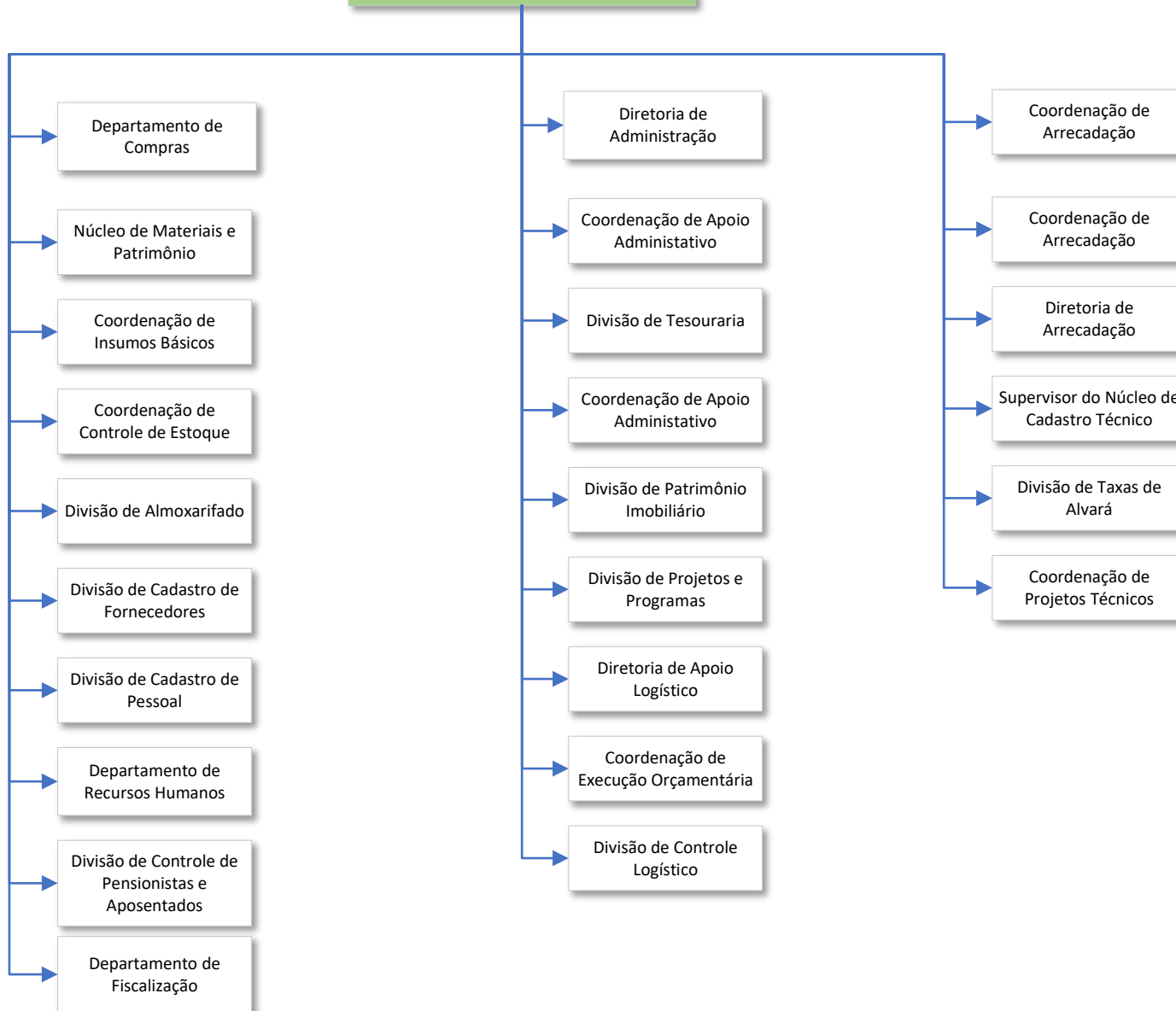


# ORGANOGRAMA ESTRUTURA ADMINISTRATIVA

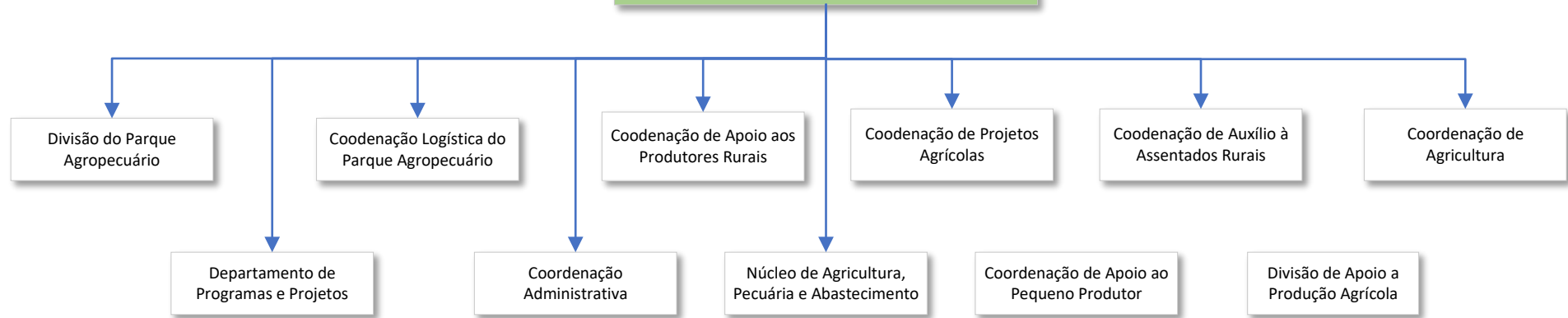
Dezembro/2022



# Secretaria de Administração e Finanças

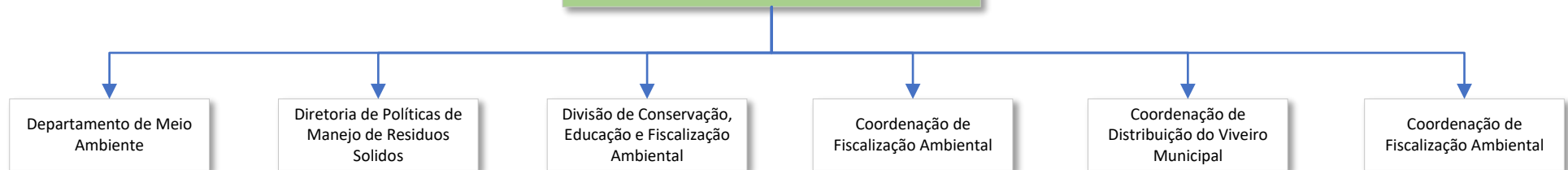


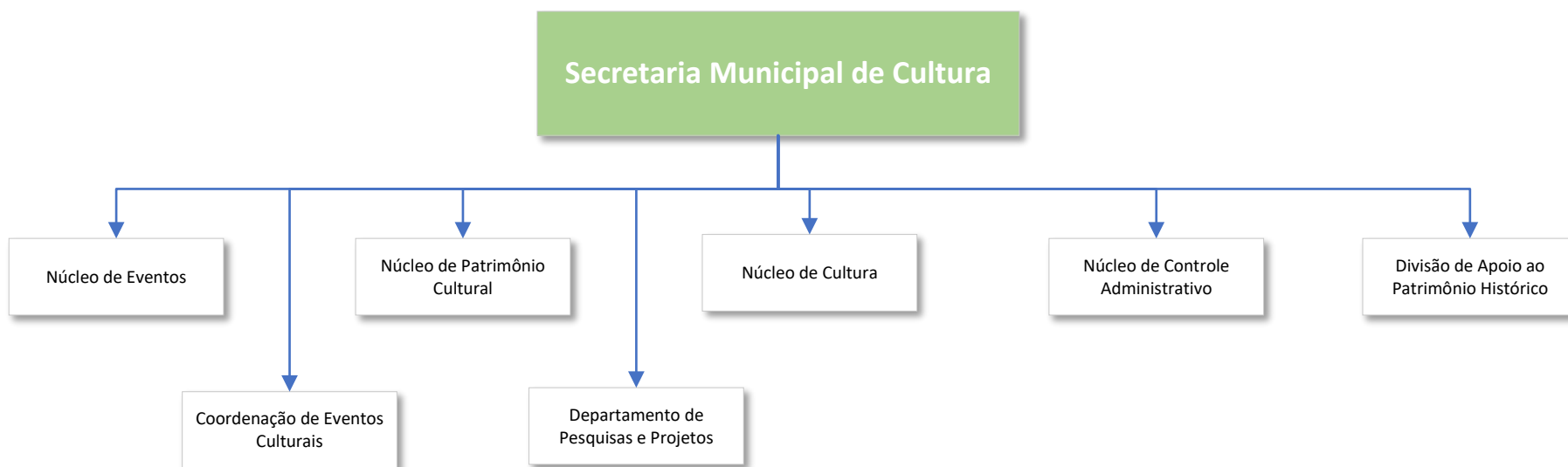
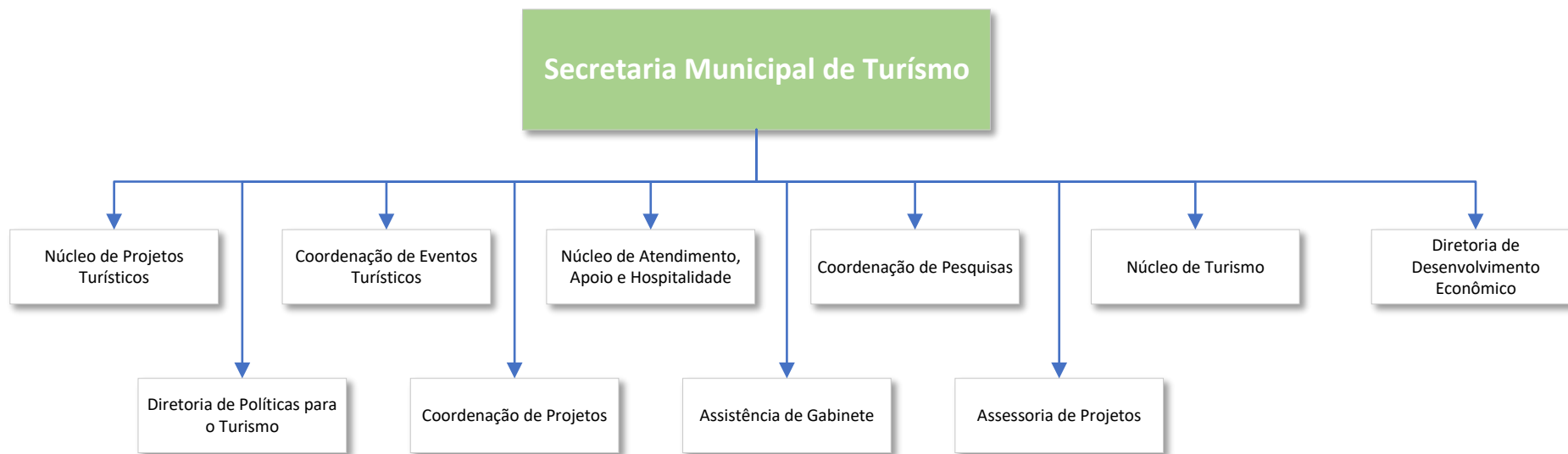
## Secretaria Municipal de Agricultura, Pecuária e Abastecimento



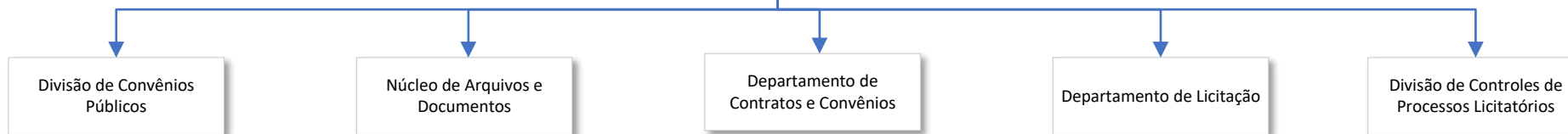
---

## Secretaria Municipal de Meio Ambiente

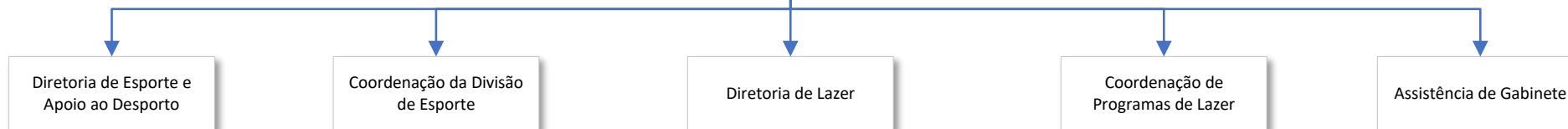




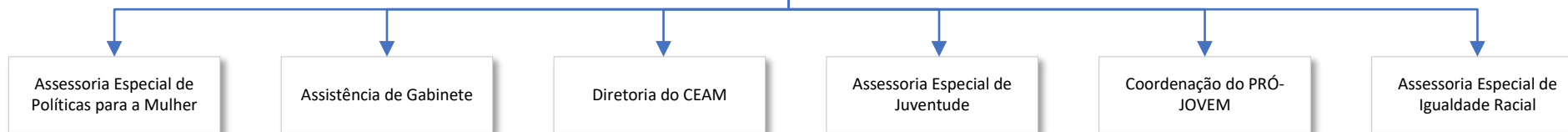
## Secretaria Municipal de Controle Interno



## Secretaria Municipal de Esporte e Lazer



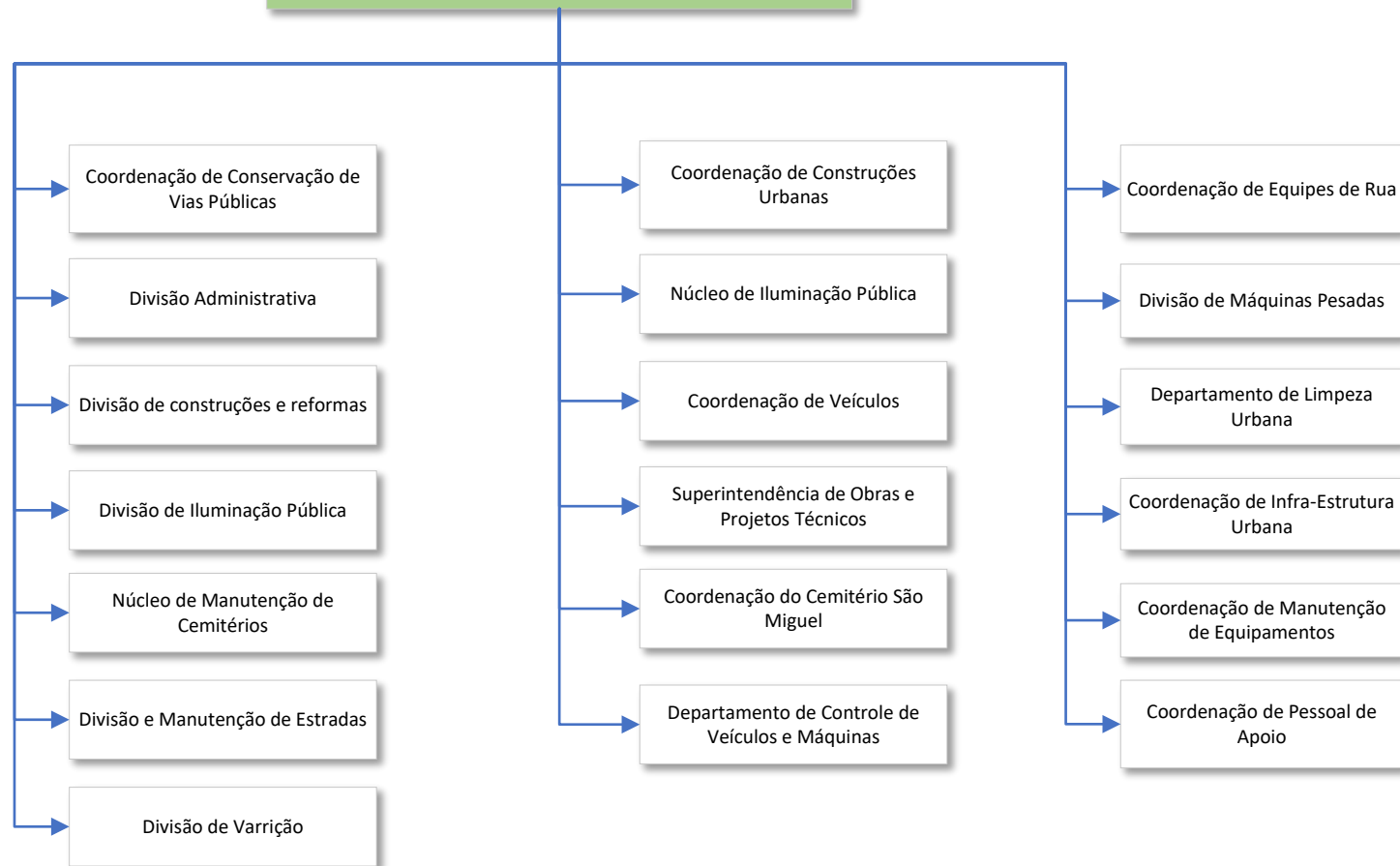
## Secretaria Municipal de Mulheres, Juventude e Direitos Humanos



## Secretaria Municipal de Trânsito, Transporte e Mobilidade Urbana

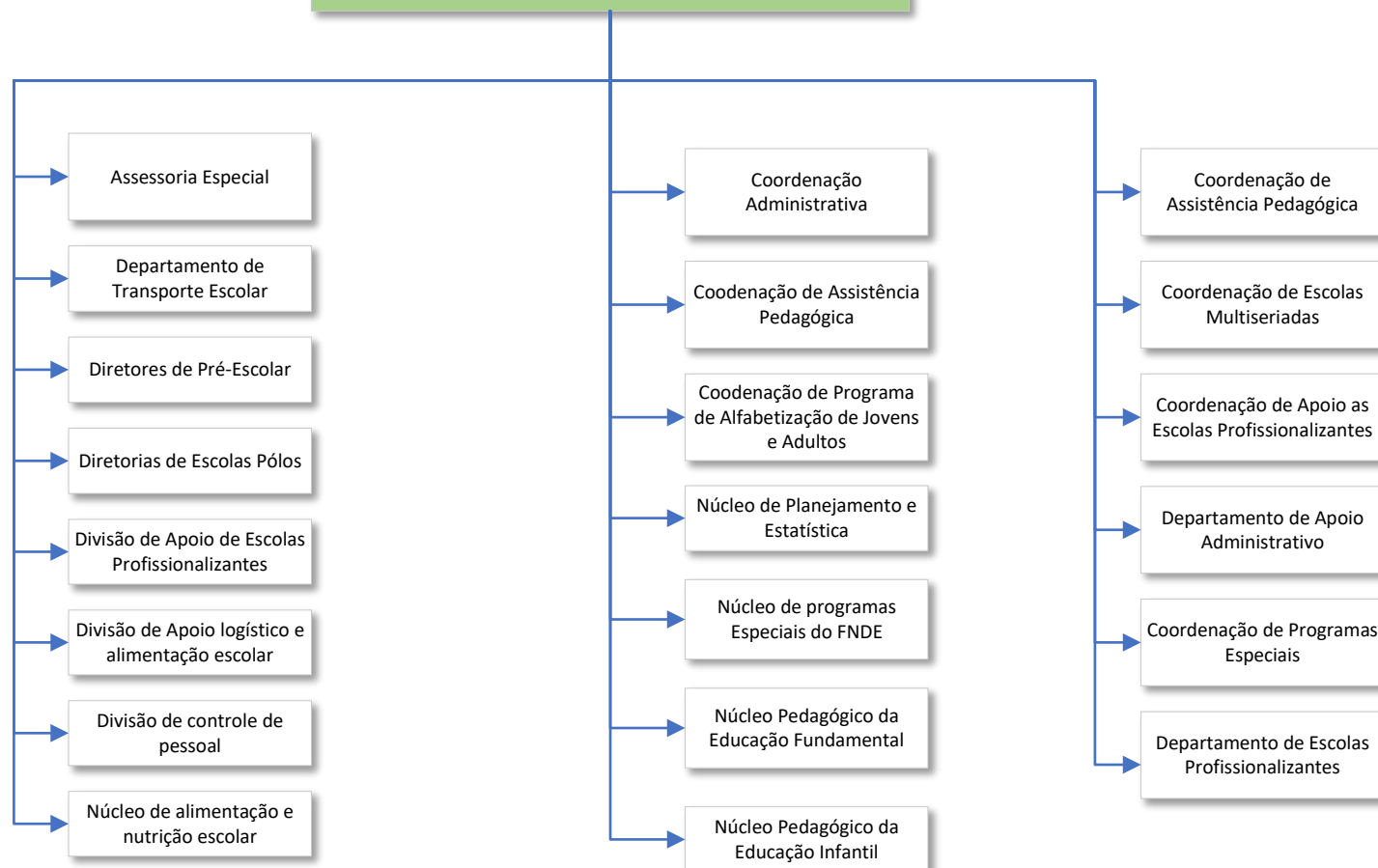


# Secretaria Municipal de Obras e Serviços Públicos





# Secretaria Municipal de Educação



# Secretaria Municipal de Saúde



# Secretaria Municipal de Assistência Social, Trabalho e Habitação

